



What is The Nassau Hub Study?

Nassau County has initiated *The Nassau Hub Study Alternatives Analysis/Environmental Impact Statement (AA/EIS)*. Funded through a Federal Transit Administration (FTA) grant, the Study will identify transportation issues within the central portion of the County and make recommendations for improvements that will enhance the existing transit network, provide new transportation choices, address congestion issues, and support economic development efforts.

Where is The Nassau Hub?

The Nassau Hub occupies an approximate 11.7-square-mile area in the heart of Nassau County, and is home to the Hofstra University (existing campus and planned medical school), Nassau Community College, Museum Row, the Nassau Veterans Memorial Coliseum, the County Government Center, Nassau University Medical Center, Mitchel Field / Eisenhower Park, Roosevelt Field, and other notable County features (refer to the enclosed maps). Additionally, thousands of residents, employees, students and others live and work within the area. This crucial economic center, so vital to the future of Nassau County, has substantial traffic congestion, lacks efficient and direct transit choices and includes large areas of disjointed land use patterns.

Why undertake The Nassau Hub Study?

The Nassau Hub Major Investment Study (MIS), completed in 2006, identified mobility problems in the Study Area, such as growing traffic congestion, auto-centered development, increased pollution and constraints on economic growth. The MIS concluded that Federal grants could potentially be used to help implement transit improvements in the Hub. Therefore, Nassau County is undertaking The Nassau Hub Study AA/EIS to further investigate transportation improvements that may be eligible for Federal funding, leading to the implementation of these improvements.

What is the process for The Nassau Hub Study?

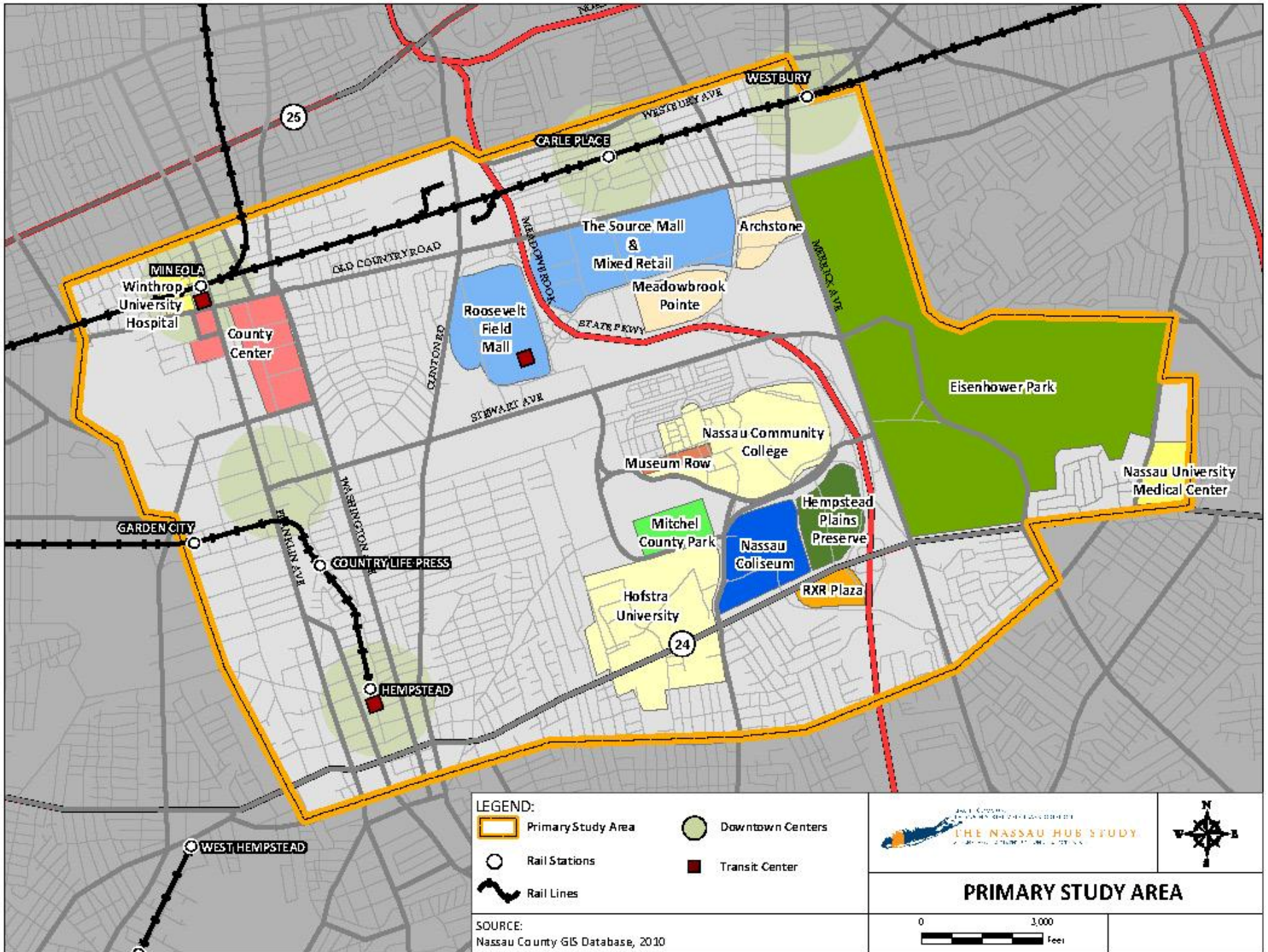
Transportation improvement projects seeking Federal funding must follow a standard process. An important early step in this planning process is the preparation of an Alternatives Analysis (AA). An AA is prepared to document existing and future transportation problems, evaluate a range of potential alternatives to address those problems, and select a preferred alternative for more detailed study. The AA will be completed in about one year, after which an Environmental Impact Statement (EIS) will be prepared to identify the potential impacts of the preferred alternative on the human and natural environment.

Who can participate in The Nassau Hub Study?

Two Study committees have been formed to work with the County. The Technical Advisory Committee (TAC) will provide regulatory, policy, operating, and design guidance during the AA/EIS process. The TAC includes representatives from Federal, State and local agencies, transit operators, County and municipal officials, as well as other agencies or organizations with technical expertise. The Stakeholder Committee will provide community feedback and serve as a liaison between the public and the Study team throughout the Study. Participants on the Stakeholder Committee include elected officials, business organizations, institutions and civic groups. Additionally, the Study Team wants to hear from the public and will provide multiple opportunities to review Study information, ask questions, and provide input and comments. This will be done through public meetings, smaller group meetings, an interactive web site and Study fact sheets and newsletters describing Study progress.

How do I get involved?

If you would like to get involved or have questions concerning the Study, please email us at nassauhub@jacobs.com. You can also visit us at our website www.nassauhub.com. We want to hear from you!



LEGEND:

- Primary Study Area
- Rail Stations
- Rail Lines
- Downtown Centers
- Transit Center

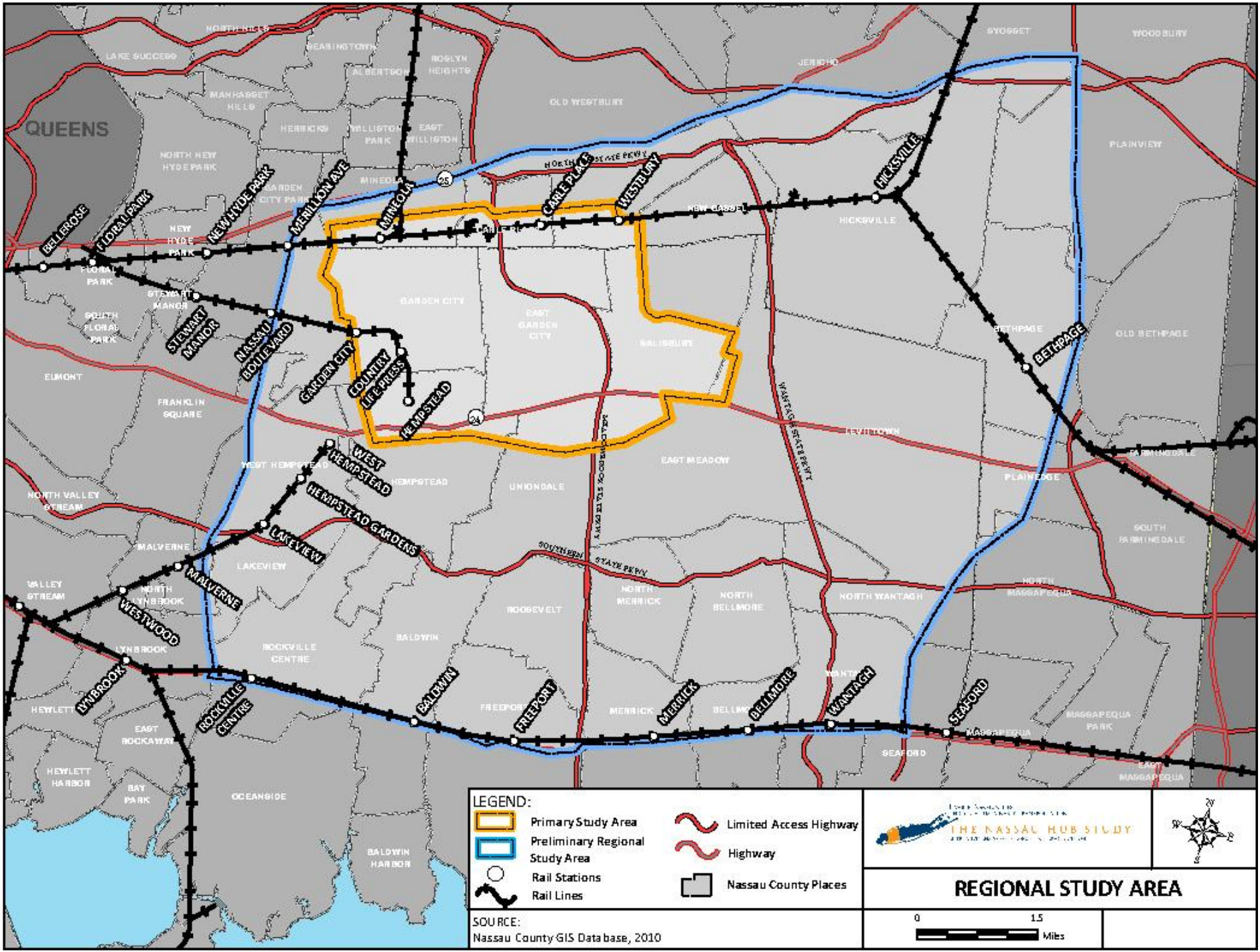
THE NASSAU HUB STUDY
AN EAST COAST PLANNING AND CONSULTING COMPANY



PRIMARY STUDY AREA

0 1,000 Feet

SOURCE:
 Nassau County GIS Database, 2010



LEGEND:

	Primary Study Area		Limited Access Highway
	Preliminary Regional Study Area		Highway
	Rail Stations		Nassau County Places
	Rail Lines		

LONG ISLAND RAILROAD
METRO-NORTH RAILROAD
THE NASSAU HUB STUDY
A PART OF THE NASSAU COUNTY TRANSPORTATION PLAN



SOURCE:
Nassau County GIS Data base, 2010

REGIONAL STUDY AREA

